

A person is using a tablet computer on a wooden table. The tablet screen displays the logo and name of 'THE GREAT HOUSE' along with a welcome message. In the background, there is a coffee cup on a saucer and some papers. The overall scene is a professional meeting or business setting.

**THE GREAT HOUSE**  
HOTEL

**CONFERENCE CENTRE**

The Premier Business Meeting Venue



# MEET WITH THE GREAT HOUSE



## A UNIQUE VENUE

The Great House Hotel is a beautiful Grade II listed building turned luxury 3-star hotel and wedding venue in Bridgend. Originating from around 1550, the hotel is believed to have been a gift bought from HRH Queen Elizabeth I to Robert Stanley – The Earl of Leicester, who used it as a hunting lodge.

The Hotel is located in the pretty conservation village of Laleston and is now one of the leading hotels in Bridgend. Located just 10 minutes away from the seaside town of Porthcawl and 25 minutes equidistant between Cardiff & Swansea.

A unique blend of historic original features contributes to The Great House's mature and warm

atmosphere character – the flagstone floors, oak beams, inglenook fireplaces, mullioned windows, stone archways and dovecot in the south wall combine with modern excellent facilities, services and friendliness.

At our hotel, our aim is to make your stay with us relaxing and enjoyable. We want you to unwind and to feel at home here, whether you choose to read a book or dine in the Restaurant Tommy Heaney – our top-rated restaurant. The Great House Hotel in Bridgend offers the perfect location to enjoy a memorable occasion.







# CHOICE OF ROOMS AND LAYOUTS

Room Name	Main Room	Tapestry Room	Edgar Room
<b>Dimensions</b>			
Width	5.50m	3.50m	5.50m
Length	12.00m	3.70m	8.00m
Floor Area	66m <sup>2</sup>	13m <sup>2</sup>	44m <sup>2</sup>
<b>Capacity</b>			
Theatre Style	70	12	40
Boardroom	40	10	22
'U' Shape	35/50	-	24/34
Classroom	40	-	25
Cabaret	50	-	25
<b>Facilities</b>			
Natural Light	Yes	Yes	Yes
Electrical Sockets	8	4	8
Telephone Points	0	0	1
Television Socket	0	1	1
LCD Projector & Screen	Yes	Yes	Yes
Flipchart and Pens	Yes	Yes	Yes



# CONFERENCE PACKAGES



## Full Day Delegate\*

From £27\*\*

- Room Hire
- Flip Chart & Pens
- LCD Projector & Screen
- WiFi
- Paper & Pencil
- Water & Refreshment Mints
- Tea & Coffee on Arrival with Bacon Rolls or Welsh Rarebit
- Mid-Morning Tea, Coffee & Biscuits
- Lunch from either Option 1, 2 or 3
- Mid-Afternoon Tea, Coffee & Cakes

## Half Day Delegate\*

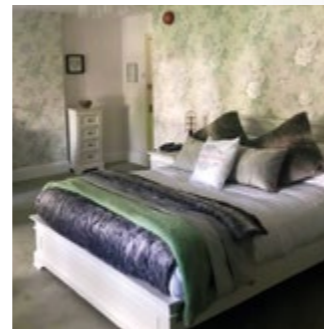
From £22\*\*

- Room Hire
- Flip Chart & Pens
- LCD Projector & Screen
- WiFi
- Paper & Pencil
- Water & Refreshment Mints
- Tea & Coffee on Arrival with Bacon Rolls or Welsh Rarebit
- Mid-Morning Tea, Coffee & Biscuits
- Lunch from either Option 1, 2 or 3

## Room Hire Only

Half Day £75  
Full Day £150

- Room Hire
- Flip Chart & Pens
- LCD Projector & Screen
- WiFi
- Paper & Pencil
- Water & Refreshment Mints
- Tea & Coffee is available from £2.75 per Delegate



\* The Full Day Delegate / Half Day Delegate package applies to a minimum of 10 guests. For 10 and under the price will be provided per item and lunch chosen from our freshly sourced 2 course set lunch menu.

\*\* 24 hour package would be £150 per delegate to include the day delegate package as well as bed, breakfast and evening meal chosen from our menu.

# CONFERENCE LUNCH MENUS

At recently relaunched Restaurant Tommy Heaney we aim to provide an exquisite dining experience in welcoming and relaxed surroundings, reflecting the best in Welsh cooking.

## Option 1 - £19 pp Fork Buffet

### Cold

New Potato, Red Onion Mustard  
Cous Cous, Pomegranate, Mint, Coriander

### Hot

Salmon, Hake & King Prawn Pie, Fennel, Citrus Crumb  
Free Range Chicken Breast, Mushroom, Tomato, Tarragon Sauce

Buttered New Potatoes  
Steamed Seasonal Vegetables

### Dessert

Dessert of the Day

## Option 2 - £17 pp Afternoon Tea

Chef's Selection of Finger Sandwiches on White and Whole Bread to include:

Ham, Severn and Wye Smoked Salmon & Cream Cheese, Cucumber and Mayonnaise

Freshly Baked Warm Scones with Strawberry Jam and Clotted Cream  
Carrot & Walnut Cake  
Raspberry Almond Cake

Chocolate Brownie  
Mango Cheesecake  
Tonka Bean Pannacotta

*Please note this is a sample menu which may be subject to change.*

## Option 3 - £15 pp Light Finger Buffet Tea

A Selection of Sandwiches  
Oven Baked Pizza Selection (Vegetable or Meat)

Chicken & Chorizo Pinchos  
Aubergine Chips, Rosemary Sea Salt, Honey

Chicken Wings  
Thai Fishcakes  
Dessert of the Day

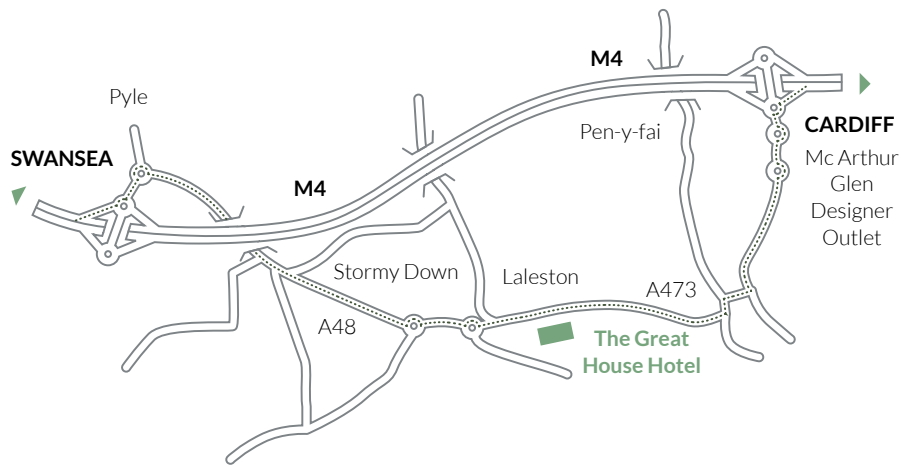


  
RESTAURANT  
TOMMY HEANEY

*Congratulations to our Head Chef - Tommy Heaney who recently won the Northern Ireland regional heats on BBC's Great British Menu.*



# THE GREAT HOUSE HOTEL



---

## The Great House Hotel

8 High Street,  
Laleston, Bridgend,  
South Wales, CF32 0HP

01656 657644

[enquiries@great-house-laleston.co.uk](mailto:enquiries@great-house-laleston.co.uk)

[www.great-house-laleston.co.uk](http://www.great-house-laleston.co.uk)

The Great  
House Hotel

